

RESOLUTION 17-05-01-02
CITY OF THORNE BAY

A RESOLUTION OF THE CITY COUNCIL ACTING AS THE PLANNING AND ZONING COMMISSION, RECOMMENDING THAT TRACT AP AND TRACT AQ, CURRENTLY NOT ZONED, BE ZONED AS DEER CREEK RESIDENTIAL

WHEREAS, the City Council is the governing body for the City of Thorne Bay, Alaska; and

WHEREAS, in the absence of an active Planning and Zoning Commission, the City Council shall perform all planning functions; and

WHEREAS, the City Council held a Planning and Zoning workshop on April 4, 2017, to identify un-zoned parcels within the City Limits, and review the current zoning ordinances; and

WHEREAS, In the early 1990's the Planning Commission recommended portions of both these parcels be developed as Deer Creek Subdivision; and

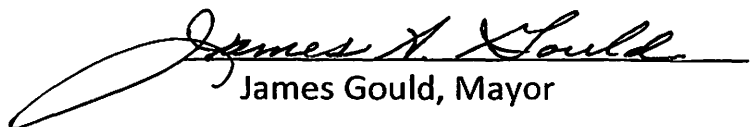
WHEREAS, the City Council believes it to be in the best interest of the City to zone Tracts AP and AQ as Residential to be compatible with adjacent property zones of;

- Deer Creek Subdivision (Deer Creek Residential Zone)
- Scenic view Subdivision (residential); and

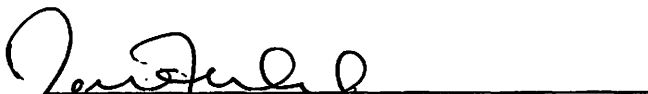
WHEREAS, not all the land within this zone change is suitable for development and should be left in open space or green belts when developed as residential lots; and

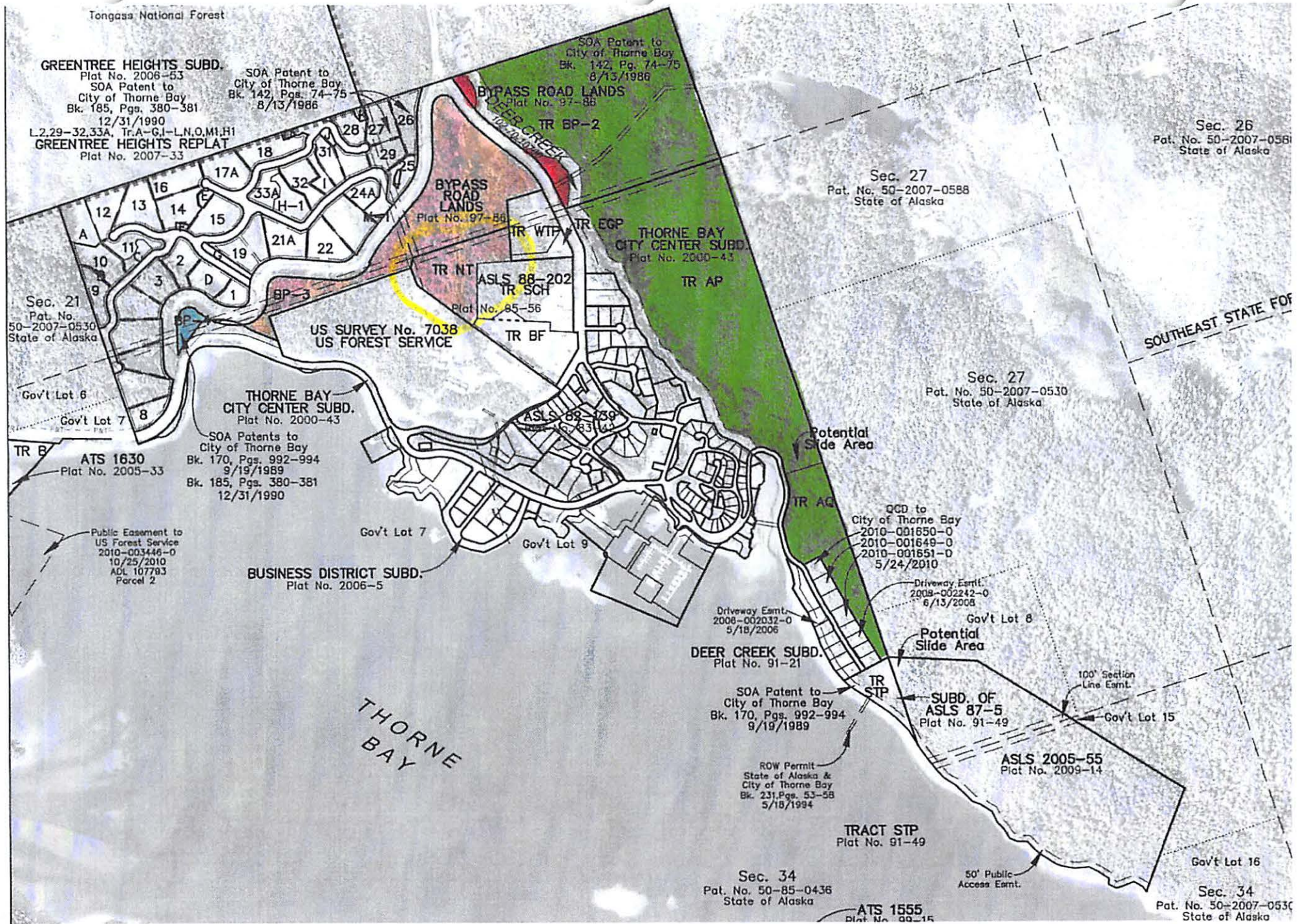
NOW, THEREFORE, BE IT RESOLVED that the City Council, acting as the Planning Commission, for the City of Thorne Bay, recommends that Tracts AP and AQ, un-zoned lands, be zoned as Residential.

PASSED AND APPROVED: May 1, 2017


James Gould, Mayor

ATTEST:


Teri Feibel, CMC



Tongass National Forest

GREENTREE HEIGHTS SUBD.

Plat No. 2006-63
SOA Patent to
City of Thorne Bay
Bk. 185, Pgs. 380-381
12/31/1990
L.2,29-32,33A, Tr.A-G,I-L,N,O,M,H
GREENTREE HEIGHTS REPLAT
Plat No. 2007-33

SOA Patent to
City of Thorne Bay
Bk. 142, Pgs. 74-75
8/13/1986

SOA Patent to
City of Thorne Bay
Bk. 142, Pg. 74-75
8/13/1986

BYPASS ROAD LANDS
Plat No. 97-88

BYPASS ROAD LANDS
Plat No. 97-88

THORNE BAY CITY CENTER SUBD.
Plat No. 2000-43

THORNE BAY CITY CENTER SUBD.
Plat No. 2000-43

BUSINESS DISTRICT SUBD.
Plat No. 2006-5

DEER CREEK SUBD.
Plat No. 91-21

SOA Patent to
City of Thorne Bay
Bk. 170, Pgs. 992-994
9/19/1989

SUBD. OF ASLS 87-5
Plat No. 91-49

ASLS 2005-55
Plat No. 2009-14

TRACT STP
Plat No. 91-49

Sec. 34
Pat. No. 50-85-0436
State of Alaska

ATS 1555
Plat No. 99-15

Sec. 26
Pat. No. 50-2007-0581
State of Alaska

Sec. 27
Pat. No. 50-2007-0588
State of Alaska

Sec. 27
Pat. No. 50-2007-0530
State of Alaska

SOUTHEAST STATE FOR

QCD to
City of Thorne Bay
2010-001650-0
2010-001649-0
2010-001651-0
5/24/2010

Driveway Easmt.
2008-002242-0
6/13/2008

Driveway Easmt.
2008-002032-0
5/18/2006

Potential Slide Area

100' Section Line Easmt.

50' Public Access Easmt.

Sec. 34
Pat. No. 50-2007-0530
State of Alaska

THORNE BAY

Sec. 21
Pat. No. 50-2007-0530
State of Alaska

Gov't Lot 6
Gov't Lot 7

ATS 1630
Plat No. 2005-33

SOA Patents to
City of Thorne Bay
Bk. 170, Pgs. 992-994
9/19/1989
Bk. 185, Pgs. 380-381
12/31/1990

Public Easement to
US Forest Service
2010-003446-0
10/25/2010
ADM: 107793
Parcel 2

US SURVEY No. 7038
US FOREST SERVICE

ASLS 88-202
TR SCH
Plat No. 85-56

ASLS 89-139
TR BF
Plat No. 83-14

Gov't Lot 7
Gov't Lot 9

Potential Slide Area

Potential Slide Area

Gov't Lot 16