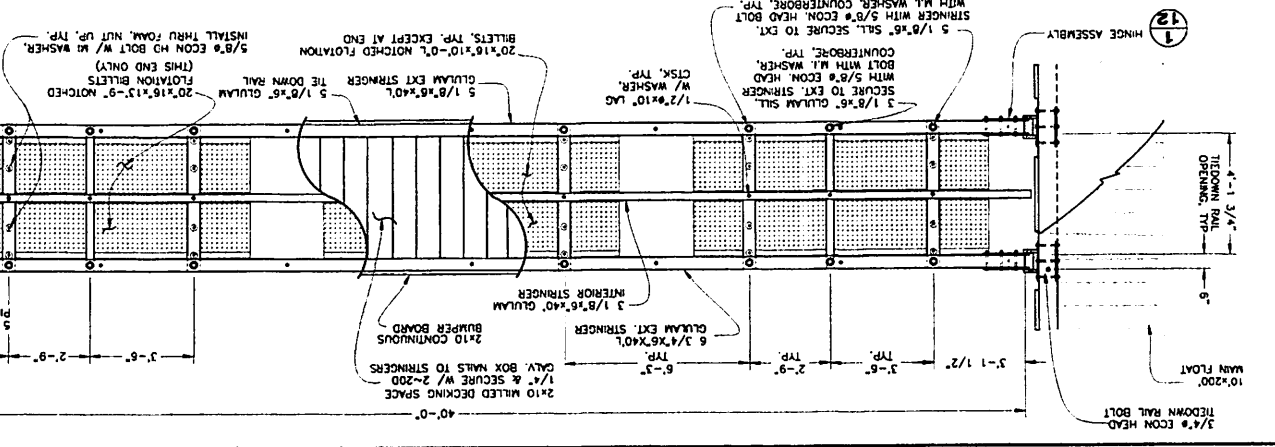
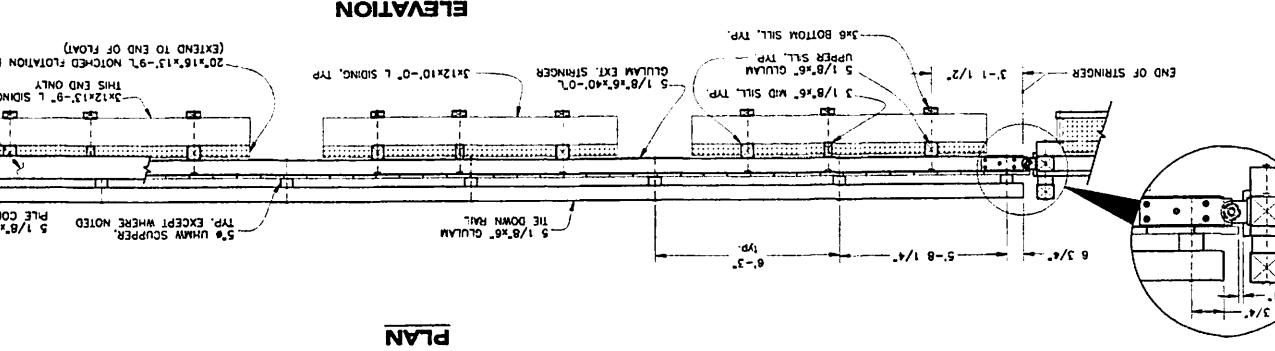
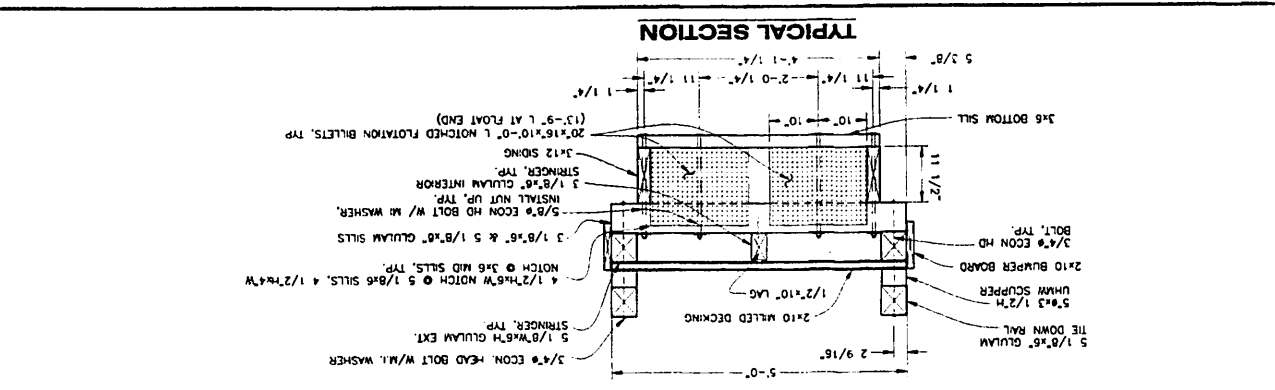
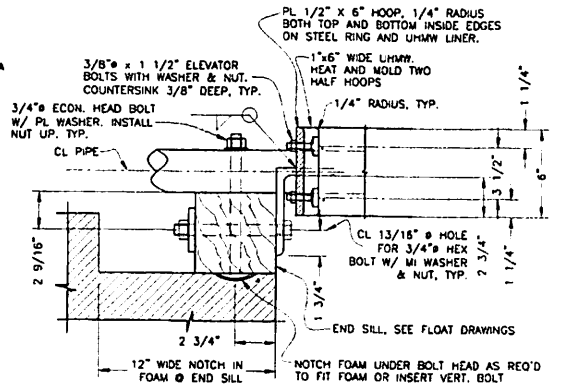
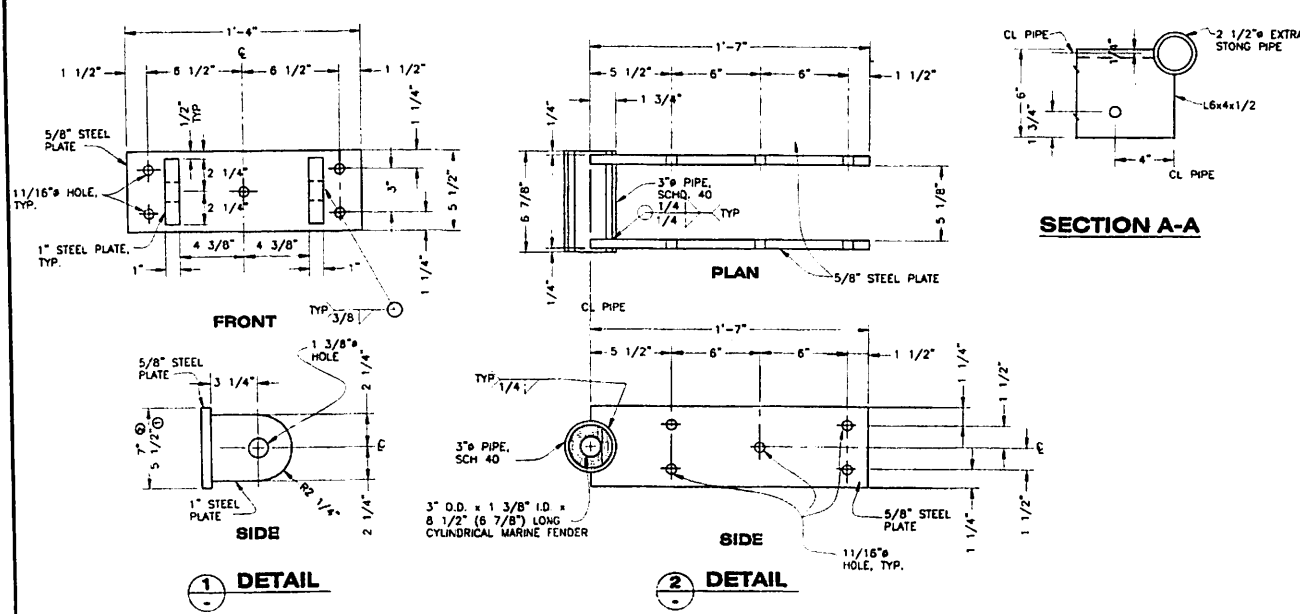
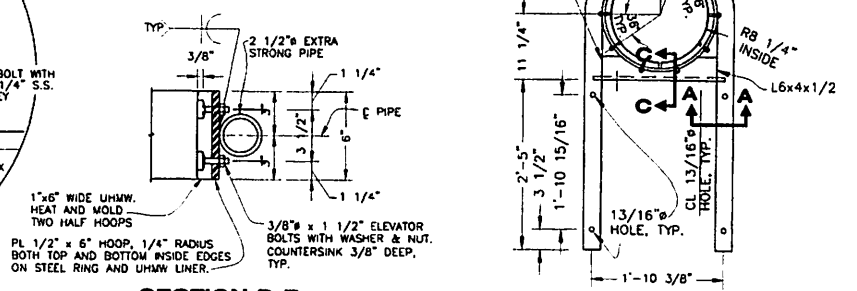
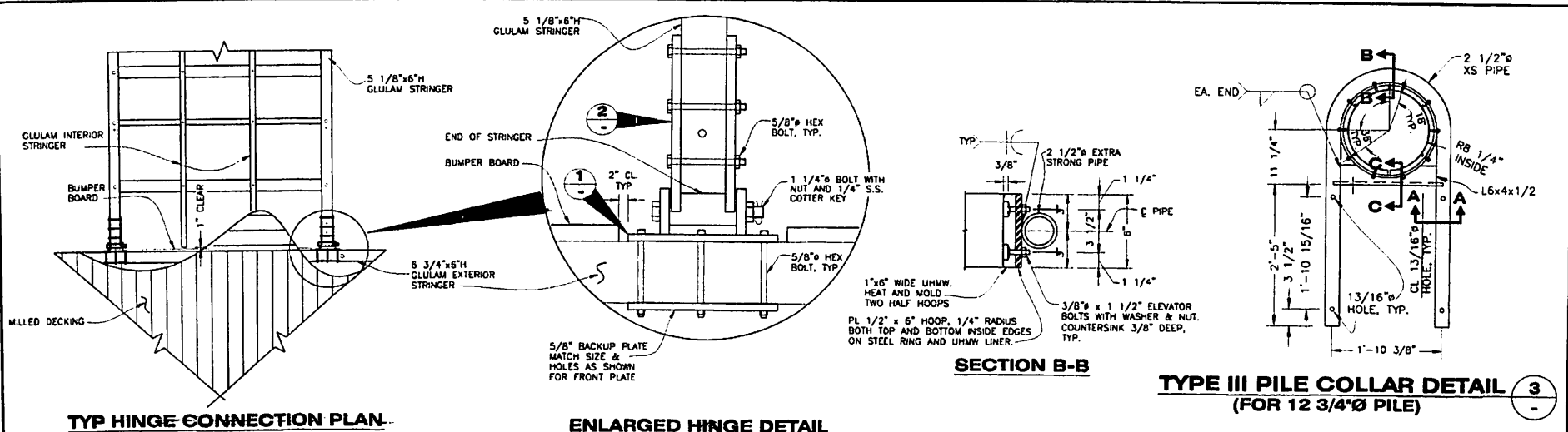

	<p style="text-align: center;">DAVISON LANDING HARBOR PHASE II PROJECT #69292</p> <p style="text-align: center;">6x40 STALL FLOATS</p> <p style="text-align: center;">CITY OF ANCHORAGE</p>
<p>PROJECT NO. 69292</p> <p>DATE 2011 12 17</p>	<p>PROJECT DESCRIPTION: 6x40 STALL FLOATS</p> <p>SCALE: AS SHOWN</p> <p>DESIGNED BY: [Redacted]</p> <p>CHECKED BY: [Redacted]</p> <p>DATE: [Redacted]</p>

DO NOT SCALE FROM THESE DRAWINGS USE DIMENSIONS




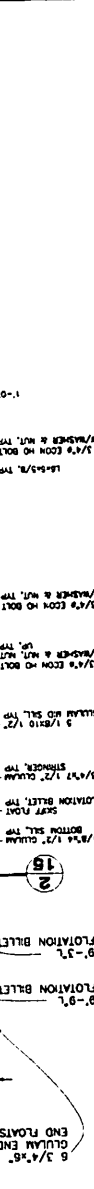
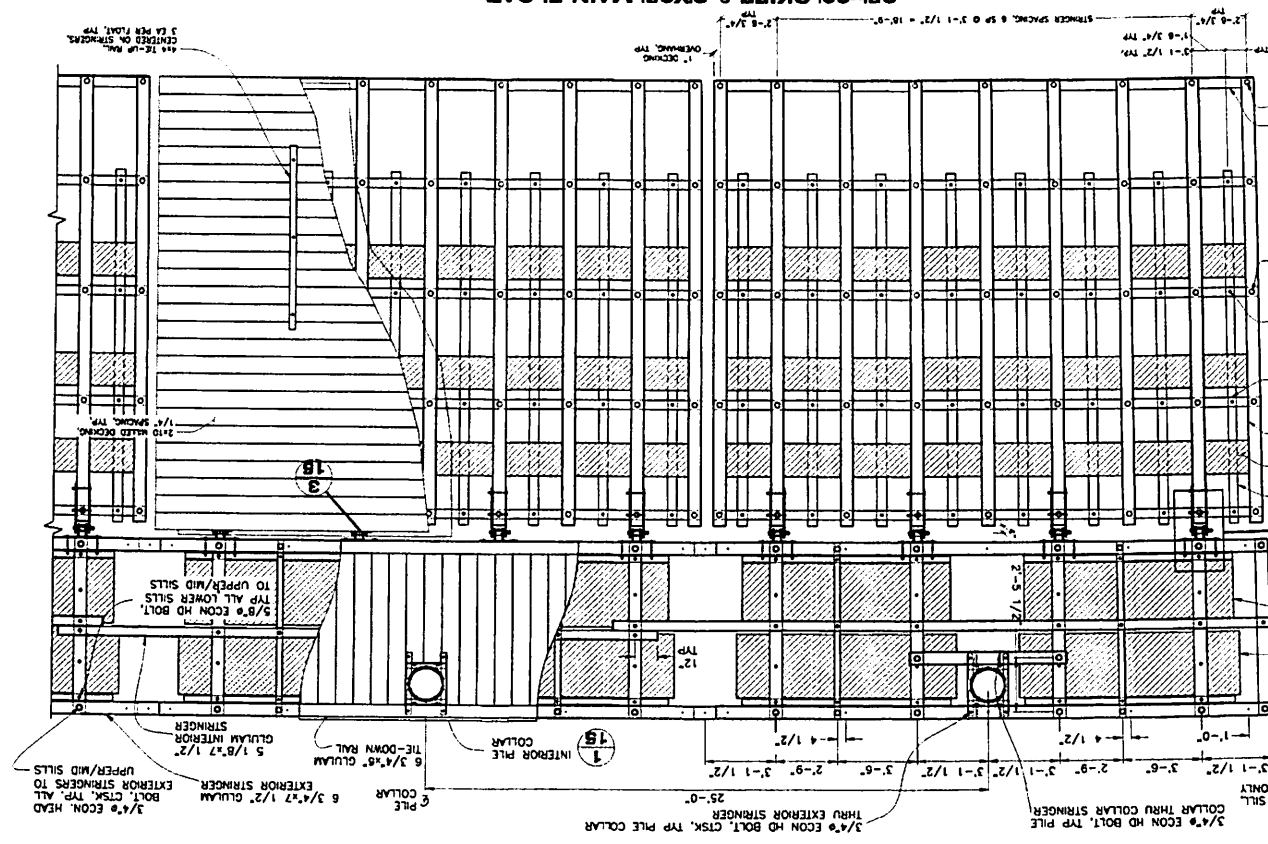
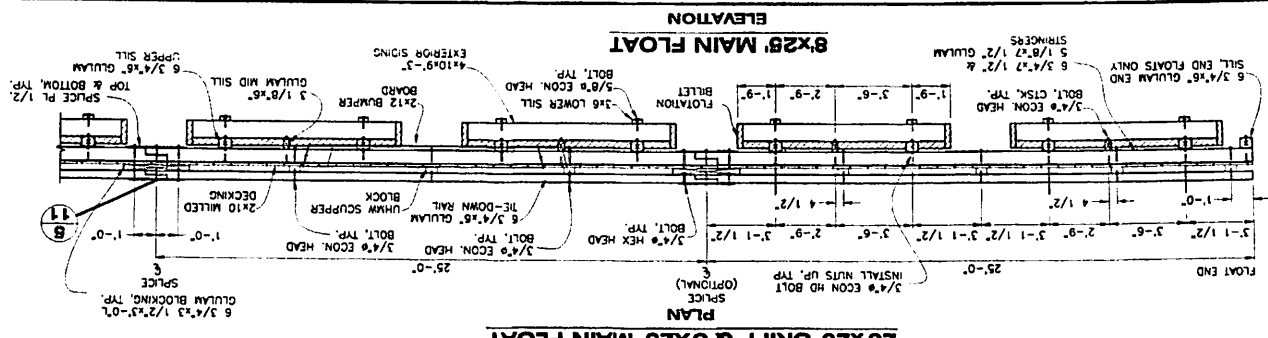
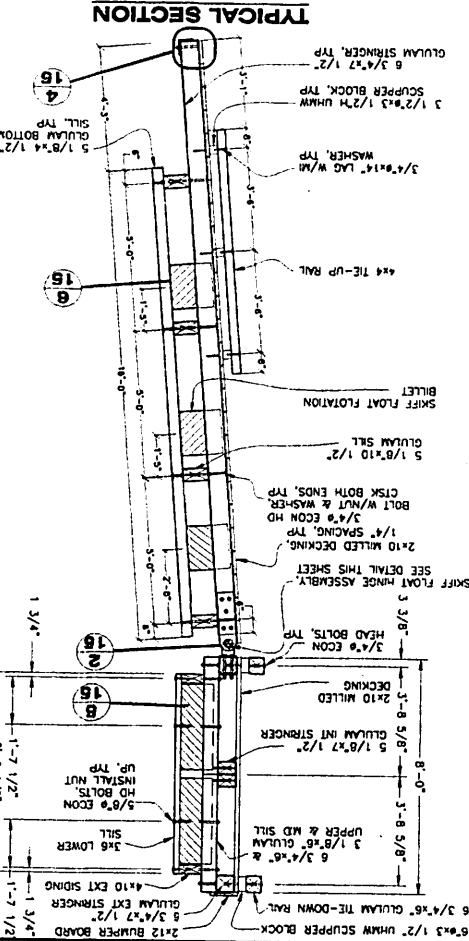


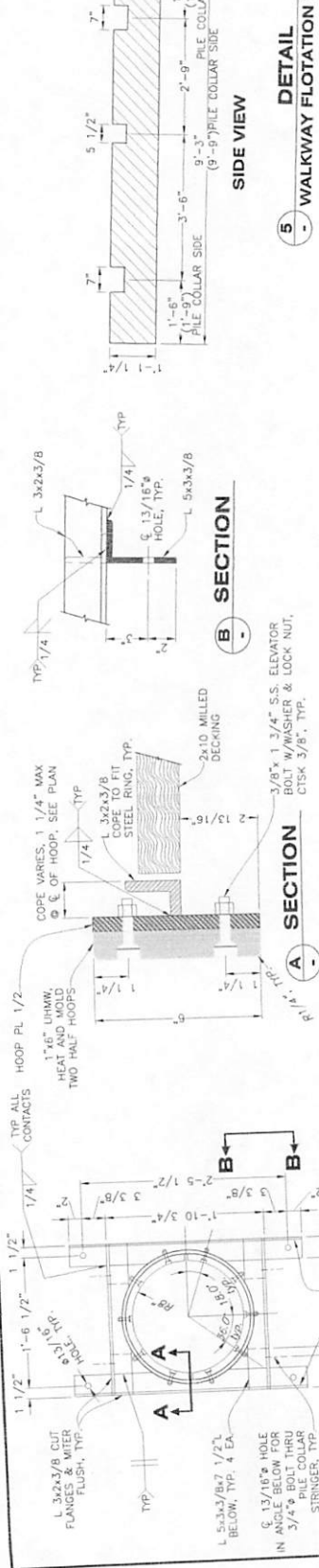
DO NOT SCALE FROM THESE DRAWINGS USE DIMENSIONS

CHECKED BY: R. MILLER		CITY OF THORNE BAY	
		DAVIDSON LANDING HARBOR PHASE II PROJECT #69292	
DESIGNED BY: STAFF	DATE: STAFF	PROJECT DESIGNATION:	YEAR: 2011
NO.	DATE	DESCRIPTION	SHEET NO. 13
69292			TOTAL SHEETS 17

PROJECT LOCATION	NO. DATE	NO. DATE
DAVIDSON PHASE II HARBOR LANDING PROJECT #8292	17	2011 14
69292	14	2011

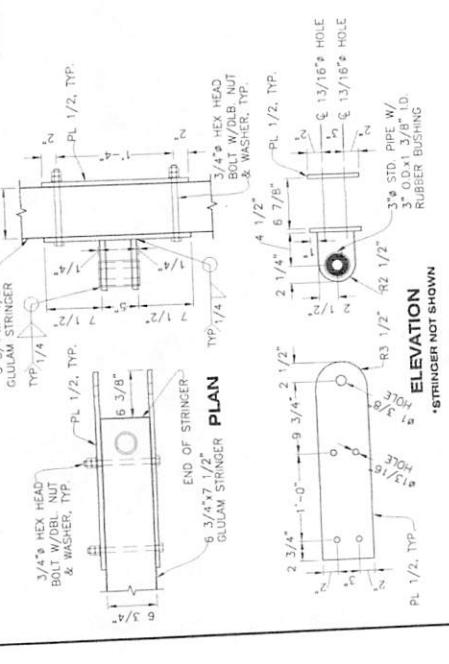
FLOAT C - 25x20 SKIFF FLOAT & 8' WIDE MAIN FLOAT
 CITY OF THORNE BAY
 K. WILKE
 DO NOT SCALE FROM THESE DRAWINGS USE DIMENSIONS

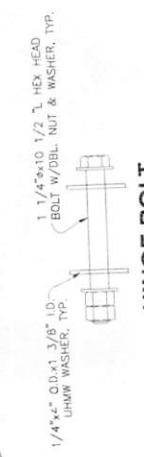


- PILE COLLAR NOTES:**
1. ALL WELDS MAY NOT BE SHOWN. WELD ALL CONTACTS W/1/4" FILLET JOIN GRIND SMOOTH WHERE REQ'D.
 2. SECURE ALL PILE COLLARS TO THE PILE COLLAR STRINGER W/ 3/4" HEX HEAD BOLTS W/ WASHERS & LOCK NUTS UNLESS OTHERWISE NOTED. EDGE MATCH BOLTS W/ EDGES OF PILE COLLARS. NOTCH DECK BOARDS AROUND COLLAR ANGLES WHEN REQ'D.

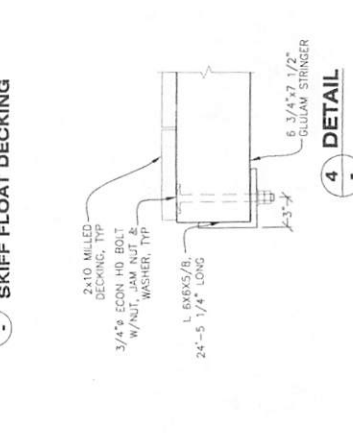
1 - TYPE IV PILE COLLAR DETAIL (FOR 12 3/4" PILE)



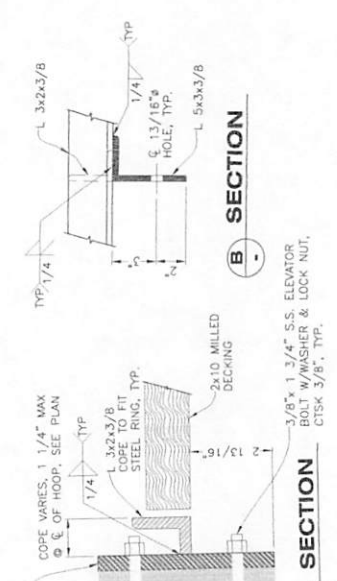
2 - SKIFF FLOAT HINGE DETAIL



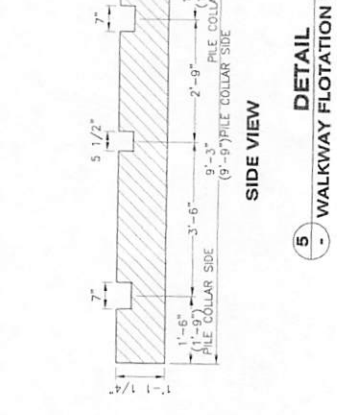
3 - SKIFF FLOAT DECKING SECTION



4 - HINGE BOLT DETAIL

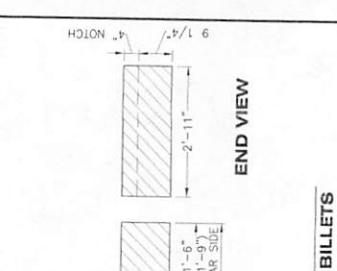


5 - WALKWAY FLOTATION BILLETS

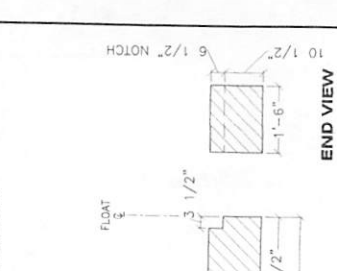


6 - SKIFF FLOTATION BILLETS

- * BILLET SHOWN COVERS HALF OF SKIFF FLOAT. MIRROR DIMENSIONS ABOUT CENTERLINE FOR ADJACENT BILLET.



END VIEW



END VIEW

DO NOT SCALE FROM THESE DRAWINGS. USE DIMENSIONS.

DESIGNED BY: SMF
 DRAWN BY: SMF
 CHECKED BY: SMF
 DATE: 15 March, October 24, 2011
 PROJECT: CITY OF THORNE BAY
 HARBOR PHASE II
 PROJECT #69292
 SHEET NO. 15
 SHEETS 17

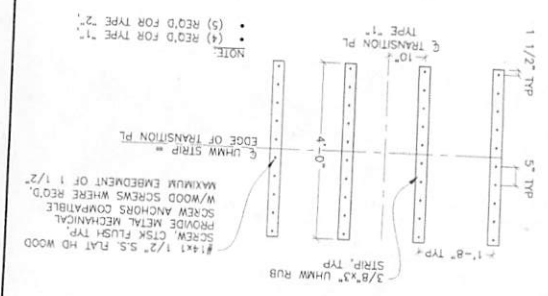
NO.	DESCRIPTION	DATE	BY
17			
16			
2011			
69292			

DAVIDSON LANDING
HARBOR PHASE II
PROJECT #69292
CITY OF THORNE BAY

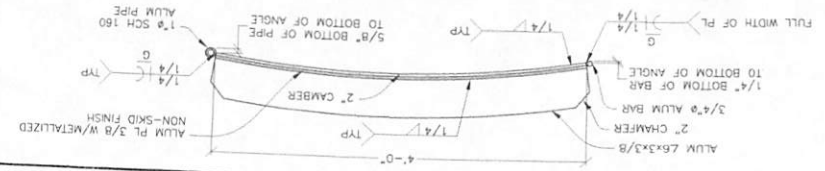
DO NOT SCALE FROM THESE DRAWINGS USE DIMENSIONS



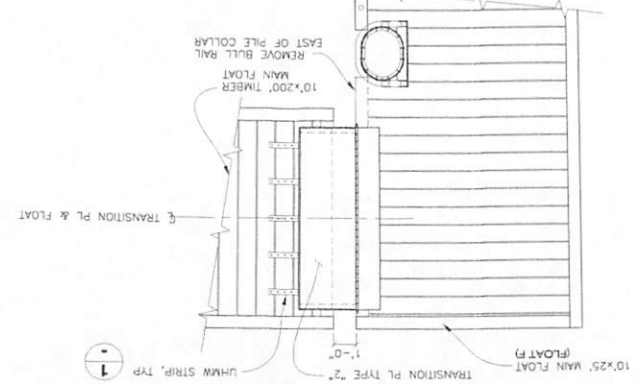
1 PLAN UHMW RUB STRIPS



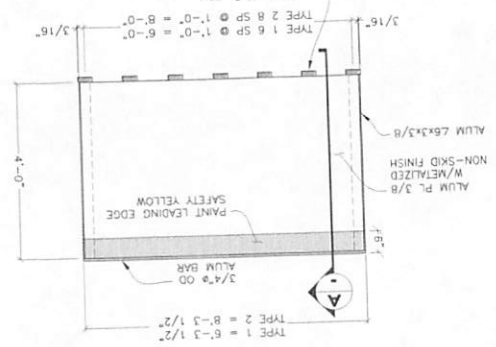
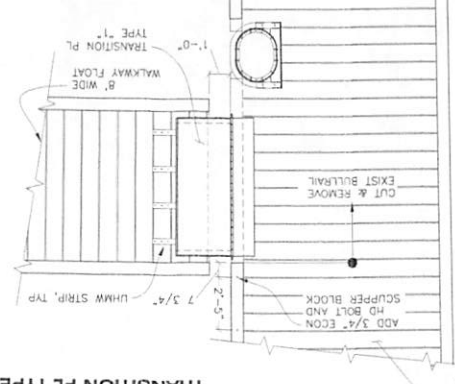
A SECTION TRANSITION PL



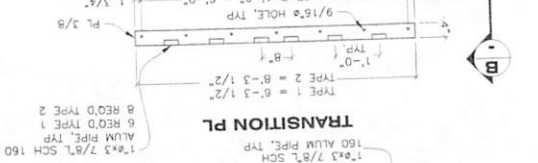
2 PLAN TRANSITION PL TYPE 2



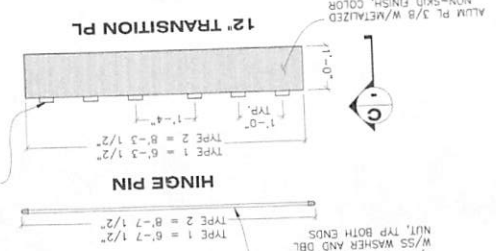
1 PLAN TRANSITION PL TYPE 1



B HINGE PIN



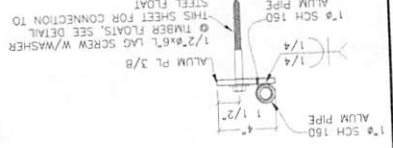
DETAIL ALUMINUM TRANSITION PL

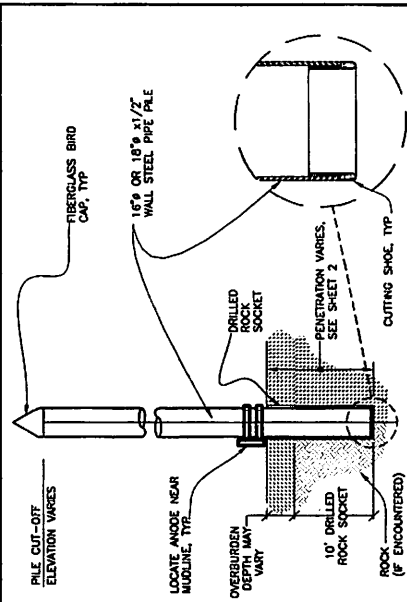


C SECTION 12" TRANSITION PL



B SECTION HINGE PL

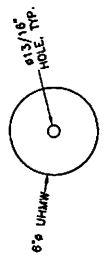




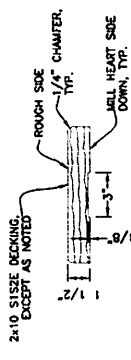
PILE NOTES:

1. SIZE ALL PILES TO ESTIMATED TIP ELEVATION UNLESS OTHERWISE APPROVED BY THE ENGINEER. SEE SHEET 2 FOR ESTIMATED TIP, PILE CUTOFF ELEVATIONS AND PILE LENGTHS.
2. WHERE MINIMAL ESTIMATED PENETRATION CANNOT BE ACHIEVED, DRILL ROCK SOCKET TO DEPTH OF MINIMUM PENETRATION THROUGH COMPETENT ROCK AND DRIVE PILE TO BOTTOM OF SOCKET.

PILE DETAILS



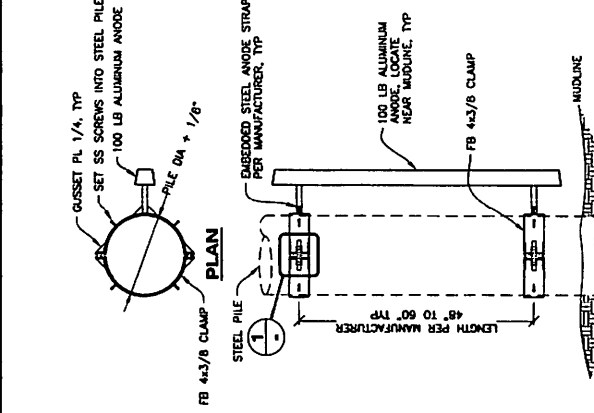
UHMW SCUPPER BLOCK DETAIL



MILLED DECKING DETAIL

DO NOT SCALE FROM THESE DRAWINGS USE DIMENSIONS

DESIGNED BY: S. LEHR	CITY OF THORNE BAY
PROJECT NO. 69292	DAVIDSON LANDING HARBOR PHASE II PROJECT #89292
DATE: 07/17/11	MISC DETAILS
NO. 17	TOTAL SHEETS 17

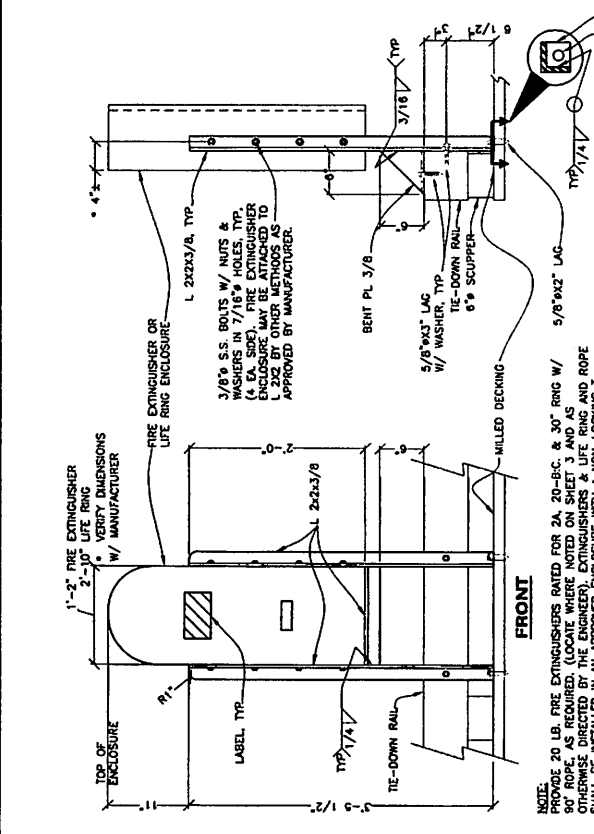


NOTE: ANODES MAY BE WELDED UNDERWATER TO PILE IN LIEU OF USING ANODE CLAMP

PILE ANODE

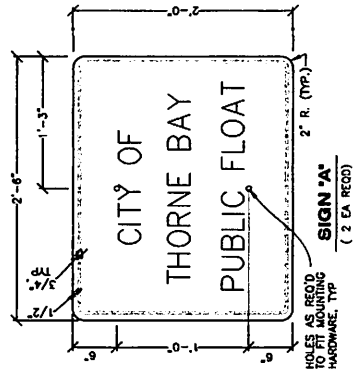
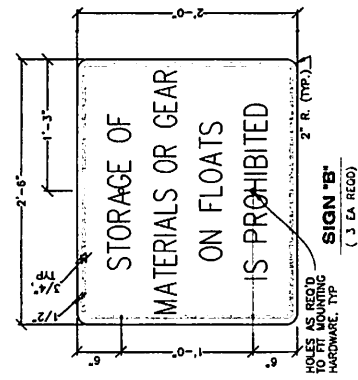
SIGN NOTES

1. INSTALL SIGNS TO BE VISIBLE TO APPROACHING TRAFFIC, AT LOCATIONS AND ORIENTATION SHOWN ON SHEET 4 AND AS DIRECTED BY THE ENGINEER.
2. SIGNS SHALL HAVE BLACK LEGEND ON WHITE BACKGROUND. SIGN FABRICATION AND MATERIALS SHALL ALSO CONFORM TO SECTION 615 SPECIFICATIONS FOR SIGNAGE. SIGN LEGEND SHALL CONFORM TO THE SIZE AND STYLE AS SHOWN IN THE PLANS AND THE ALASKA SIGN DESIGN DESIGNATION (ASDS).
3. MOUNT SIGN 'A' ON POST JUST AHEAD OF GANGWAY ON SHORE. SEE SIGN MOUNTING DETAILS FOR TYPICAL HIGHWAY SIGN POST & MOUNTING DETAILS.
4. AFTX SIGNS 'A' & 'B' TO STEEL PILES WITH 2 EACH, 3/4-INCH WIDE STAINLESS STEEL BANDS PER SIGN AND ASSOCIATED MOUNTING HARDWARE. SIGN BRACKETS SHALL BE STAINLESS STEEL USE 1/2-INCH MINIMUM DIAMETER BOLTS. DRILL HOLES IN SIGNS TO MATCH THE SELECTED MOUNTING BRACKETS.



FIRE EXTINGUISHER/LIFE RING ENCLOSURE

NOTE: PROVIDE 20 LB. FIRE EXTINGUISHERS RATED FOR 2A, 20-B.C. & 30\"/>



NO. 17	TOTAL SHEETS 17
--------	-----------------

Davidson Harbor 69292 - Estimate

ITEM #	ITEM DESCRIPTION	PAY UNIT	QUANTITY	UNIT PRICE	AMOUNT
BASIC BID					
202 (1)	RELOCATE EXISTING FLOATS	LUMP SUM	ALL REQUIRED	\$ 10,000	\$ 10,000
504 (1A)	ALUMINUM TRANSITION PLATES	EACH	3	\$ 5,000	\$ 15,000
505 (1A)	12.75" DIA x 1/2" WALL PIPE PILES, FURNISHED	LINEAR FOOT	540	\$ 75	\$ 40,500
505 (2A)	12.75" DIA x 1/2" WALL PIPE PILES, DRIVEN	EACH	8	\$ 2,500	\$ 20,000
505 (3)	16" DIA x 1/2" WALL PIPE PILES, FURNISHED	LINEAR FOOT	430	\$ 90	\$ 38,700
505 (4)	16" DIA x 1/2" WALL PIPE PILES, DRIVEN	EACH	6	\$ 2,500	\$ 15,000
505 (5A)	100 LB. PILE ANODE	EACH	14	\$ 1,750	\$ 24,500
508 (1)	10' x 20' TIMBER MOORING FLOAT	LUMP SUM	ALL REQUIRED	\$ 11,000	\$ 11,000
508 (2)	10' x 25' TIMBER MOORING FLOAT	LUMP SUM	ALL REQUIRED	\$ 14,000	\$ 14,000
508 (3)	EXISTING TIMBER FLOAT MODIFICATIONS	LUMP SUM	ALL REQUIRED	\$ 4,000	\$ 4,000
508 (4)	10' x 150' TIMBER MOORING FLOAT	LUMP SUM	ALL REQUIRED	\$ 85,000	\$ 85,000
508 (8A)	LEVELING FLOTATION BILLET, 5"x20"x4'-6"L, FURNISHED	EACH	8	\$ 150	\$ 1,200
508 (8A)	LEVELING FLOTATION BILLET, INSTALLED	EACH	8	\$ 250	\$ 2,000
508 (10A)	FIRE EXTINGUISHER STATION	EACH	4	\$ 1,500	\$ 6,000
508 (11A)	LIFE RING STATION	EACH	4	\$ 1,500	\$ 6,000
615 (7)	HARBOR SIGNS	LUMP SUM	ALL REQUIRED	\$ 2,500	\$ 2,500
640 (1)	MOBILIZATION & DEMOBILIZATION	LUMP SUM	ALL REQUIRED	\$ 75,000	\$ 75,000
642 (1)	CONSTRUCTION SURVEYING	LUMP SUM	ALL REQUIRED	\$ 5,000	\$ 5,000
ALTERNATE '1'					
505 (1C)	12.75" DIA x 1/2" WALL PIPE PILES, FURNISHED	LINEAR FOOT	275	\$ 75	\$ 20,625
505 (2C)	12.75" DIA x 1/2" WALL PIPE PILES, DRIVEN	EACH	4	\$ 2,500	\$ 10,000
505 (5B)	100 LB. PILE ANODE	EACH	4	\$ 1,750	\$ 7,000
508 (5)	5'x40' STALL FLOAT	EACH	4	\$ 11,000	\$ 44,000
ALTERNATE '2'					
504 (1B)	ALUMINUM TRANSITION PLATES	EACH	1	\$ 5,000	\$ 5,000
505 (1B)	12.75" DIA x 1/2" WALL PIPE PILES, FURNISHED	LINEAR FOOT	250	\$ 75	\$ 18,750
505 (2B)	12.75" DIA x 1/2" WALL PIPE PILES, DRIVEN	EACH	4	\$ 2,500	\$ 10,000
505 (5C)	100 LB. PILE ANODE	EACH	4	\$ 1,750	\$ 7,000
506 (6)	8' x 100' WALKWAY FLOAT	LUMP SUM	ALL REQUIRED	\$ 45,000	\$ 45,000
506 (7)	25' x 20' SKIFF FLOAT	LUMP SUM	ALL REQUIRED	\$ 30,000	\$ 30,000
506 (8B)	LEVELING FLOTATION BILLET, 5"x20"x4'-6"L, FURNISHED	EACH	4	\$ 150	\$ 600
506 (9B)	LEVELING FLOTATION BILLET, INSTALLED	EACH	4	\$ 250	\$ 1,000
506 (10B)	FIRE EXTINGUISHER STATION	EACH	1	\$ 1,500	\$ 1,500
506 (11B)	LIFE RING STATION	EACH	1	\$ 1,500	\$ 1,500

CE (10%) = \$ 37,640
 SUBTOTAL= \$ 412,940

CE (10%) = \$ 8,163
 SUBTOTAL= \$ 89,788

CE (10%) = \$ 12,035
 SUBTOTAL= \$ 132,385

SUBTOTAL = \$ 577,375.00
 C.E. (10%) = \$ 57,737.50
TOTAL = \$ 635,112.50